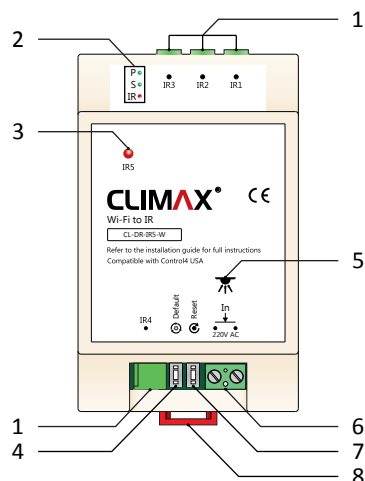


PART DESCRIPTION



1. IR Output 3.5 mm jack socket
2. Status LEDs
3. IR Blaster
4. Reset network settings button
5. IR Learner
6. Main power connectors
7. Reset & Update Module button
8. Rail mounting clip

3

CLIMAX[®]

Live in Harmony

INSTALLATION GUIDE version 1.0.1



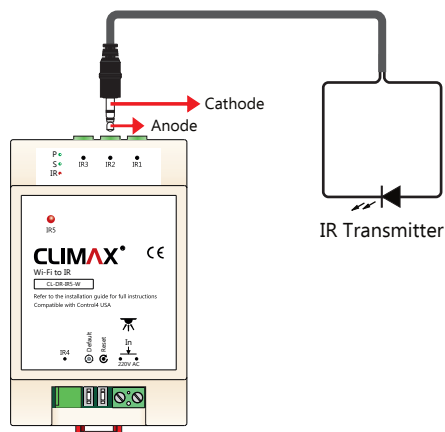
Wi-Fi to IR (CL-DR-IR5-W)

Product Specification	Input Voltage	220V AC	
	Input Current	50mA max	
	I/O Connections	Output	5 X 1-66 kHz IR channel (4 X rising-edge 5mm screw terminals & 1 X IR blaster)
		Input	1 X IR input (38 kHz)
	Network	Wi-Fi (802.11n 2.4 GHz)	

1

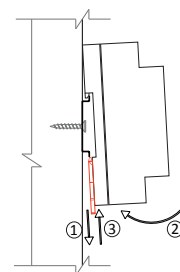
WIRING 1

Follow this diagram to connect infrared transmitters to the IR outputs.



4

MOUNTING



Rail Mounting

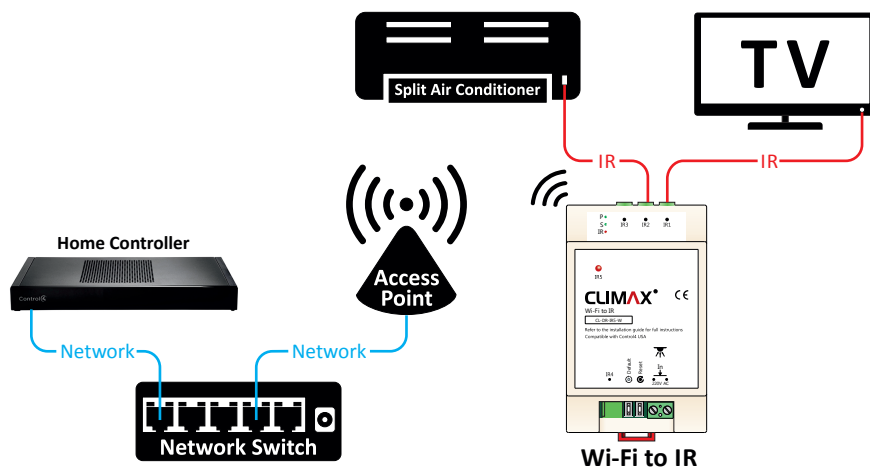
Wi-Fi to IR is designed to be installed on a standard 35 mm wide DIN rail (EN 50022, Bs5584).

Hook the module from the top, pull down the rail mounting clips, push the module to the rail and release the rail mounting clips.

2

WIRING 2

Follow the diagram below to connect the module properly.



5

SETUP & PROGRAMMING

⚠ To setup WiFi or other parameters visit www.climaxgroups.co.uk

⚠ To restore network settings to factory default press and hold Default button for more than 7 seconds.

⚠ After restore network settings, you can find the SSID under its default name and default password. The default name of SSID is HI-LINK_XXX and the default password is 12345678. To find setting page, connect to this SSID and login to its Web interface in a Web browser, try visiting the address 192.16.254.

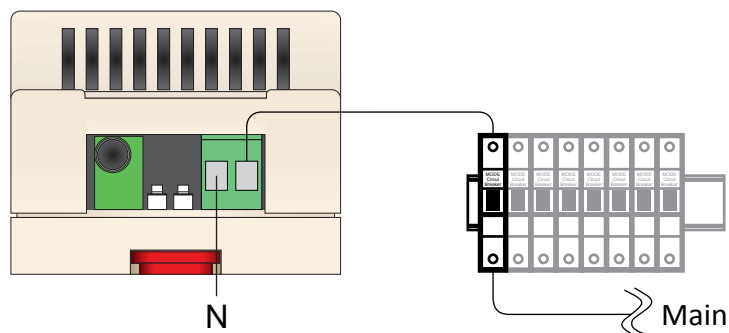
Serial Setup:

	Operation Mode	Port	Mode	Default Mode	Port	Mode
Serial setting	9600,8,n,1	8080	TCP-Server	115200,8,n,1 (use for update)	8080	TCP-Server

7

WIRING 3

Follow the diagram below to protect module in case of unwanted short circuit.



6

SETUP & PROGRAMMING

Module's LEDs

- **Power:** When the module is connected to main power, "Power LED" will flash smoothly.
- **Status:** When the module is connected to C-Bus network and receives valid data packets, "Status LED" flashes quickly. "Status LED" is "off" when the module doesn't receive any data. In direct mode, "Status LED" will flash once when the module receives a valid data packet from Home Controller.
- When the module is receiving invalid data packet, "Status LED" will remain "on" for 5 seconds.
- ✋ In some cases, when a new module is added to C-Bus network, "Status LED" might remain "on" for 5 seconds. This situation must not be considered as an error.
- **IR:** This LED flashes when the module is transmitting IR signal.

Change Device Address

The device address is fixed to "2" and is not variable.

8