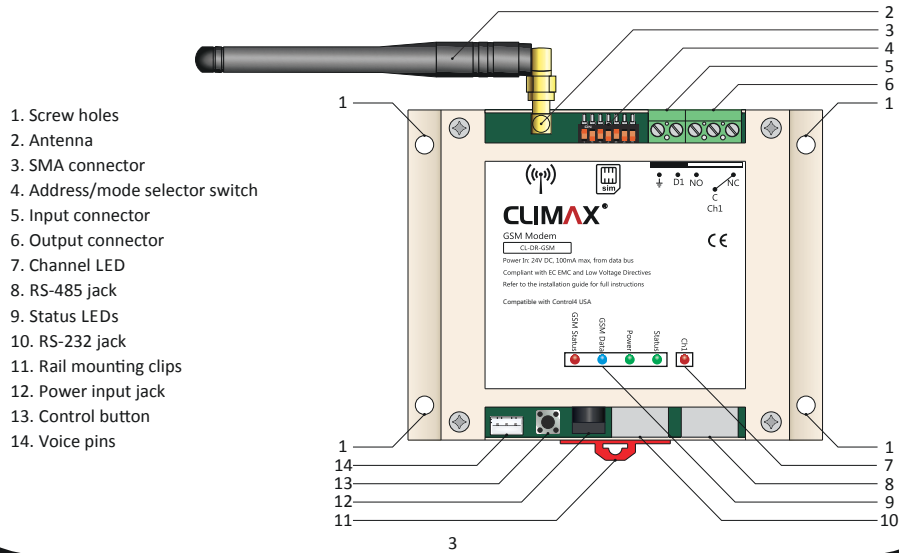


## PART DESCRIPTION



# CLIMAX<sup>®</sup>

Live in Harmony

## INSTALLATION GUIDE version 1.0.2



### GSM Modem (CL-DR-GSM)

Product Specification	<b>Input Voltage</b>	18V-24V DC (24V DC is recommended)		
	<b>Input Current</b>	100mA (for 24V DC)		
	<b>I/O Connections</b>	<b>C-Bus</b>	2 X RJ45	
		<b>RS-232 (Direct Mode)</b>	1 X RJ45	
		<b>Output</b>	1 X relay channel-8A per channel (rising-cage 5mm screw terminals)	
			Audio output	
<b>Input</b>	1 X digital dry contact input (rising-cage 5mm screw terminals)			
	Audio input			
<b>Antenna Type</b>	1 X 4dBi detachable omni-directional (RP-SMA)			

## SETUP & PROGRAMMING

### Change Module Address

The module address can be set from 0 to 31 by means of a dip switch called "address/mode selector switch". Before changing module address the main power must be disconnected. The address must be defined in binary. For instance to set address "21", the dip switch must be as below:



⚠ Never set the address "0" and "1" as "0" is not valid in C-Bus protocol and "1" is always dedicated for GatewayPro module.

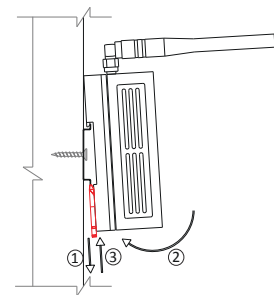
⚠ Check all C-Bus module addresses to avoid repetitive address allocation.

### Switching between Direct Mode and Network Mode

To set the module in direct mode slip button #7 to "up" position or slide it "down" to set the module in network mode.



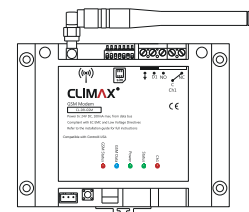
## MOUNTING



### Rail Mounting

GSM Modem is designed to be installed on a standard 35 mm wide DIN rail (EN 50022, BS 5584).

Hook the module from the top, pull down the rail mounting clips, push the module to the rail and release the rail mounting clips.



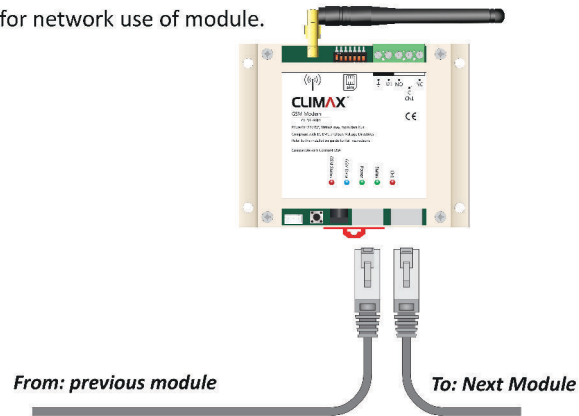
### Screw Mounting

Screw the module to any surface through 4 corner screw holes.

## WIRING 1

⚠ Before wiring the device, always unplug the main power.

Follow this wiring for network use of module.



⚠ Use the terminator socket for the last module.

5

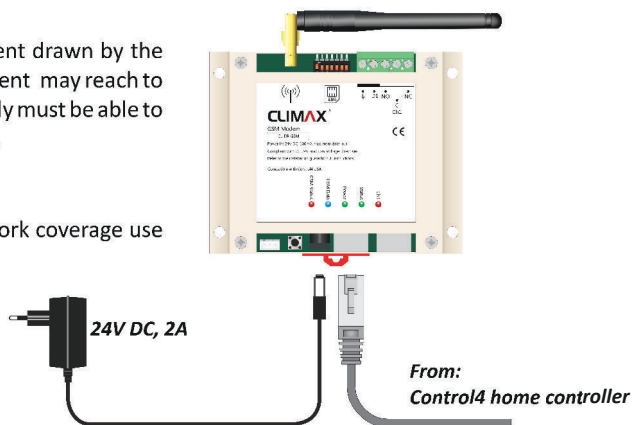
## WIRING 2

⚠ Before wiring the device, always unplug the main power.

Follow this wiring to use the module in direct mode.

⚠ While the steady state current drawn by the device is 100mA, the inrush current may reach to 2A and the selected power supply must be able to sufficiently provide that current.

👉 In case of poor mobile network coverage use higher gain antenna.

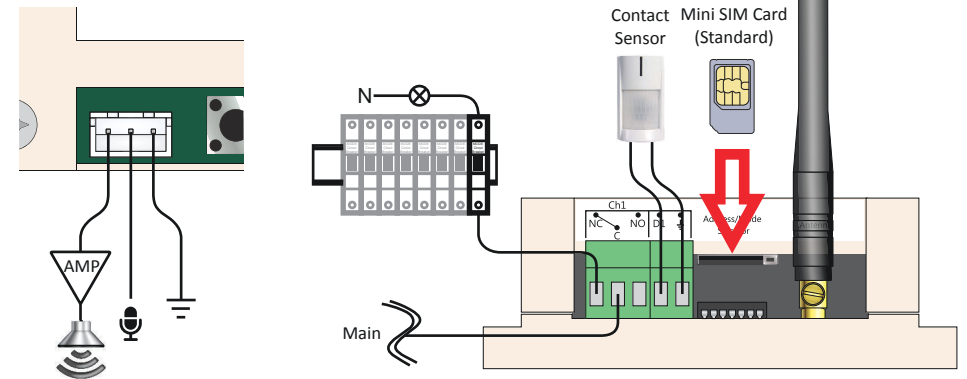


6

## WIRING 3

Follow these diagrams to insert SIM card, connect load to relay output and dry contact to input connector and also establish module's voice feature.

⚠ Never insert/remove SIM card and antenna when main power is connected.



7

## SETUP & PROGRAMMING

### Module's LEDs

- **Ch1:** Shows the status of module's relay.
- **Status:** When the module is connected to C-Bus network and receives valid data packets, "Status LED" flashes quickly. "Status LED" is "off" when the module doesn't receive any data. In direct mode, "Status LED" will flash once when the module receives a valid data packet from Home Controller. When the module is receiving invalid data packet, "Status LED" will remain "on" for 5 seconds. 🙅 In some cases, when a new module is added to C-Bus network, "Status LED" might remain "on" for 5 seconds. This situation must not be considered as an error.
- **Power:** When the module is connected to main power, "Power LED" will flash smoothly.
- **GSM Data:** "GSM Data LED" turns "on" when the SIM card receives any data and it will remain "on" until received command is done.
- **GSM Status:** "GSM Status LED" flashes every 3 seconds when SIM card is registered in a GSM network. When it does not find any network, it flashes faster.

8